

Module 7 LO8

Selected Joints of the Body

Dr. Lisa Brinn

lbrinn@fiu.edu

[Video Recording Link](#)

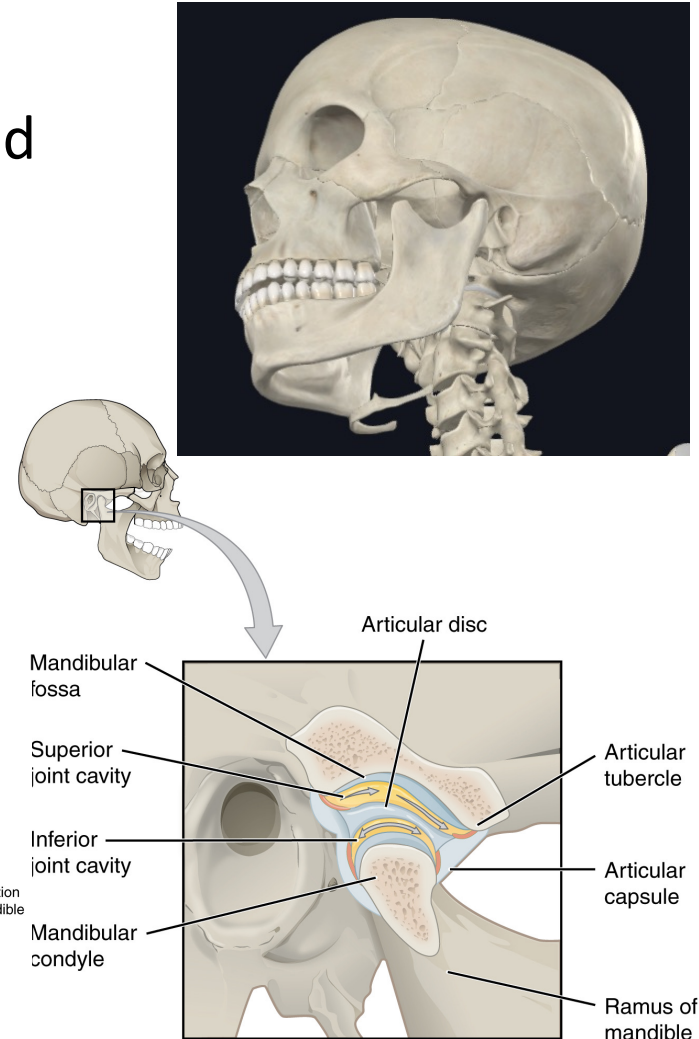
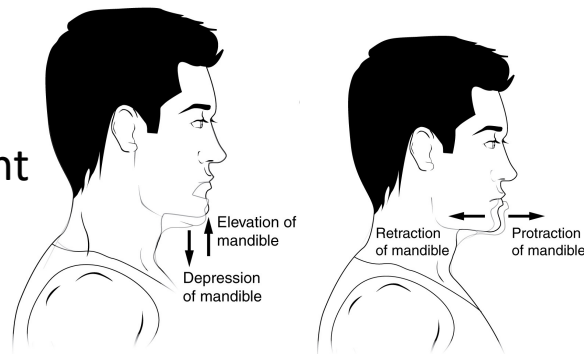
8. Selected Joints of the Body

- a) Temporomandibular joint (TMJ)
- b) Shoulder joint
- c) Elbow joint
- d) Hip joint
- e) Knee joint
- f) Ankle joint

a) Temporomandibular Joint (TMJ)

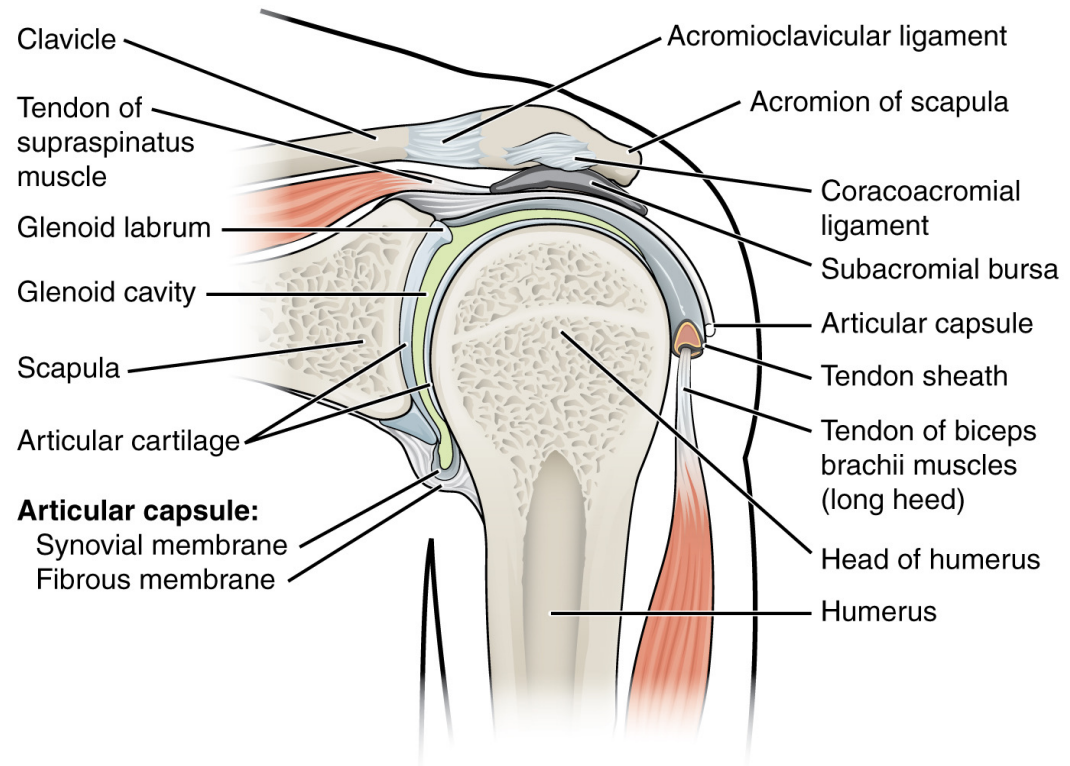
- Anatomical components
 - Mandibular condyle of mandible and mandibular fossa of temporal bone
- Movements
 - Only moveable joint of skull
 - Depression and elevation
 - Protraction and retraction

- Type of joint
 - Diarthrosis
 - Hinge and plane joint
 - Mono and biaxial



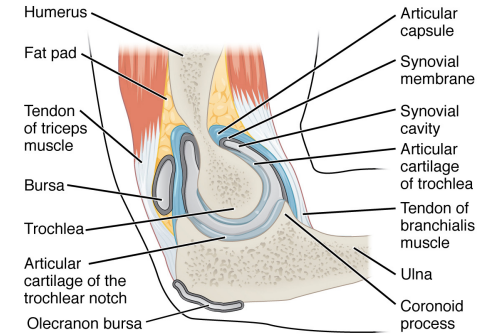
b) Shoulder Joint

- Anatomical components
 - Formed from head of humerus and glenoid cavity of scapula
- Movements
 - Flexion/extension
 - Hyperextension
 - Abduction/adduction
 - Medial/lateral rotation
 - Circumduction
- Type of joint
 - Diarthrosis
 - Ball and socket
 - Triaxial

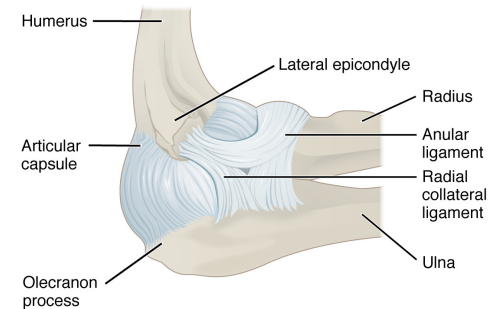


c) Elbow Joint

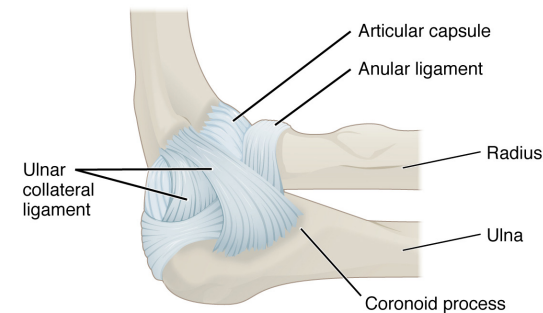
- Anatomical components
 - Formed from humeral trochlea and capitulum, trochlear notch of ulna, and head of radius
- Movements
 - Flexion and extension
- Type of joint
 - Diarthrosis
 - Hinge
 - Monoaxial



(a) Medial sagittal section through right elbow (lateral view)



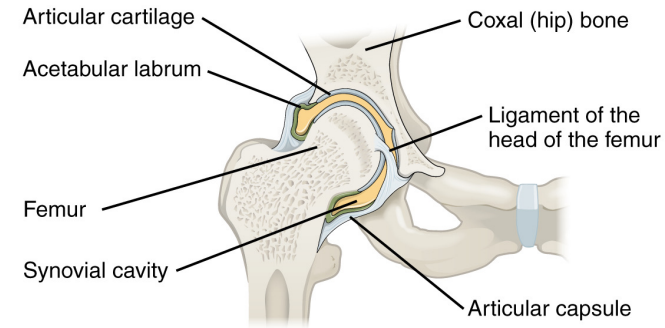
(b) Lateral view of right elbow joint



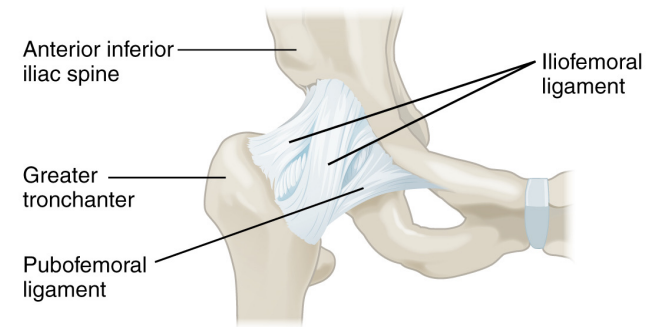
(c) Medial view of left elbow joint

d) Hip Joint

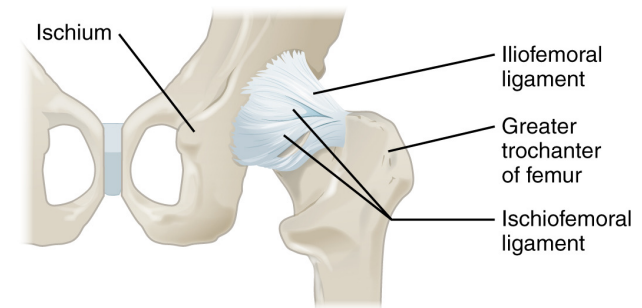
- Anatomical components
 - Formed by head of femur and acetabulum of hip
- Movements
 - Flexion/extension
 - Hyperextension
 - Abduction/adduction
 - Medial/lateral rotation
 - Circumduction
- Type of joint
 - Diarthrosis
 - Ball and socket
 - Triaxial



(a) Frontal section through the right hip joint

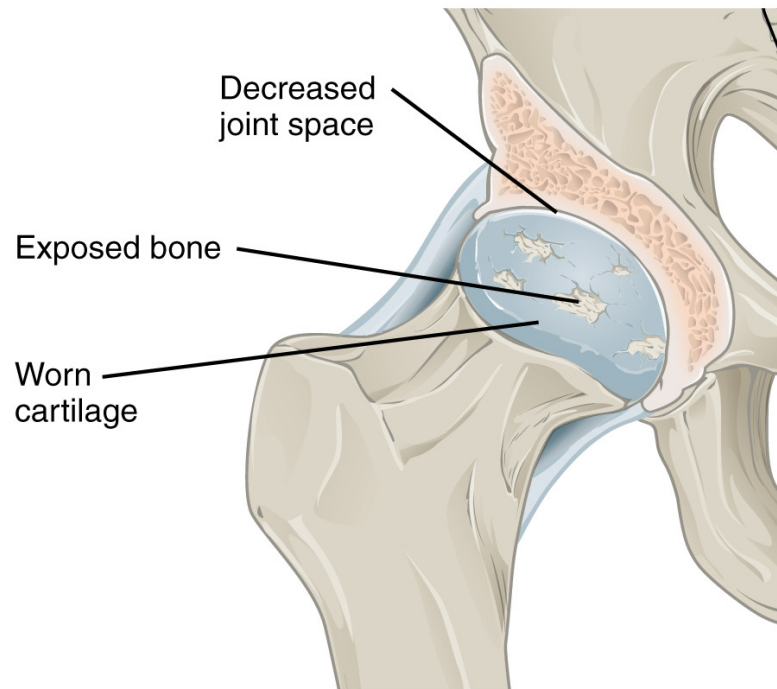
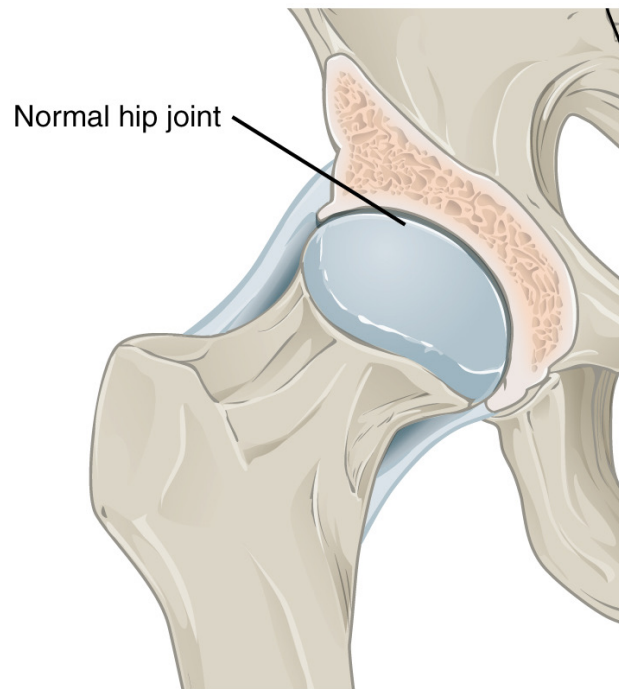


(b) Anterior view of right hip joint, capsule in place



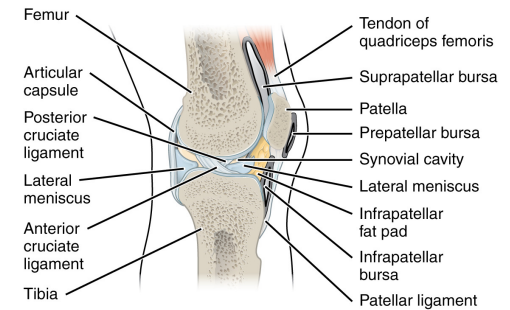
(c) Posterior view of right hip joint, capsule in place

Osteoarthritis

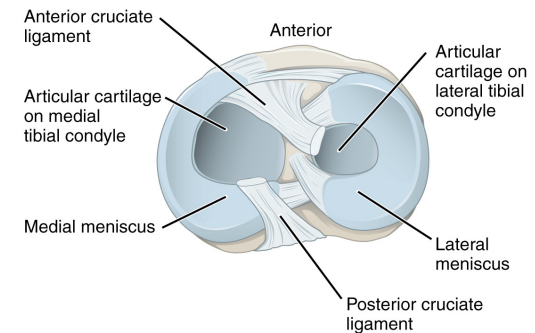


e) Knee Joint

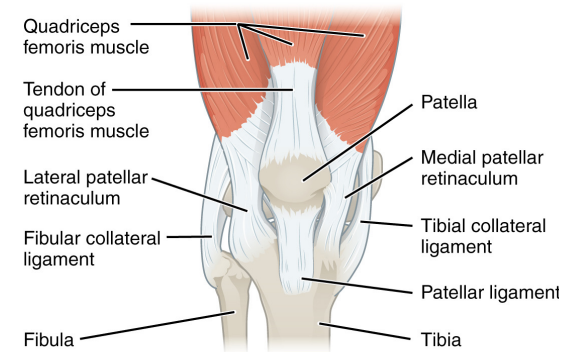
- Anatomical components
 - Formed by femoral and tibial condyles, and patella
- Movements
 - Flexion and extension
- Type of joint
 - Diarthrosis
 - Hinge
 - Monoaxial



(a) Sagittal section through the right knee joint

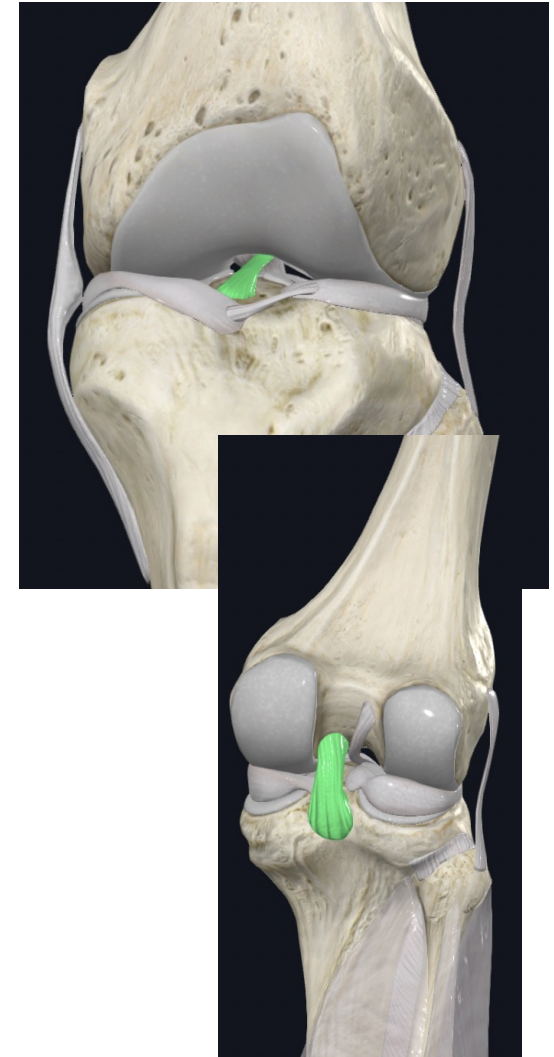
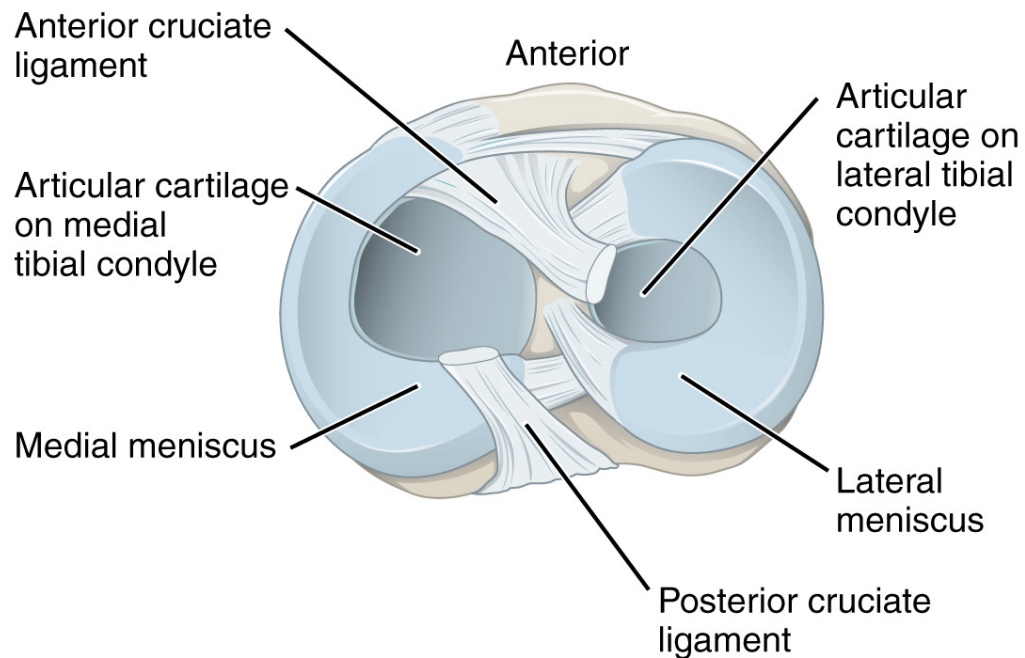


(b) Superior view of the right tibia in the knee joint, showing the menisci and cruciate ligaments

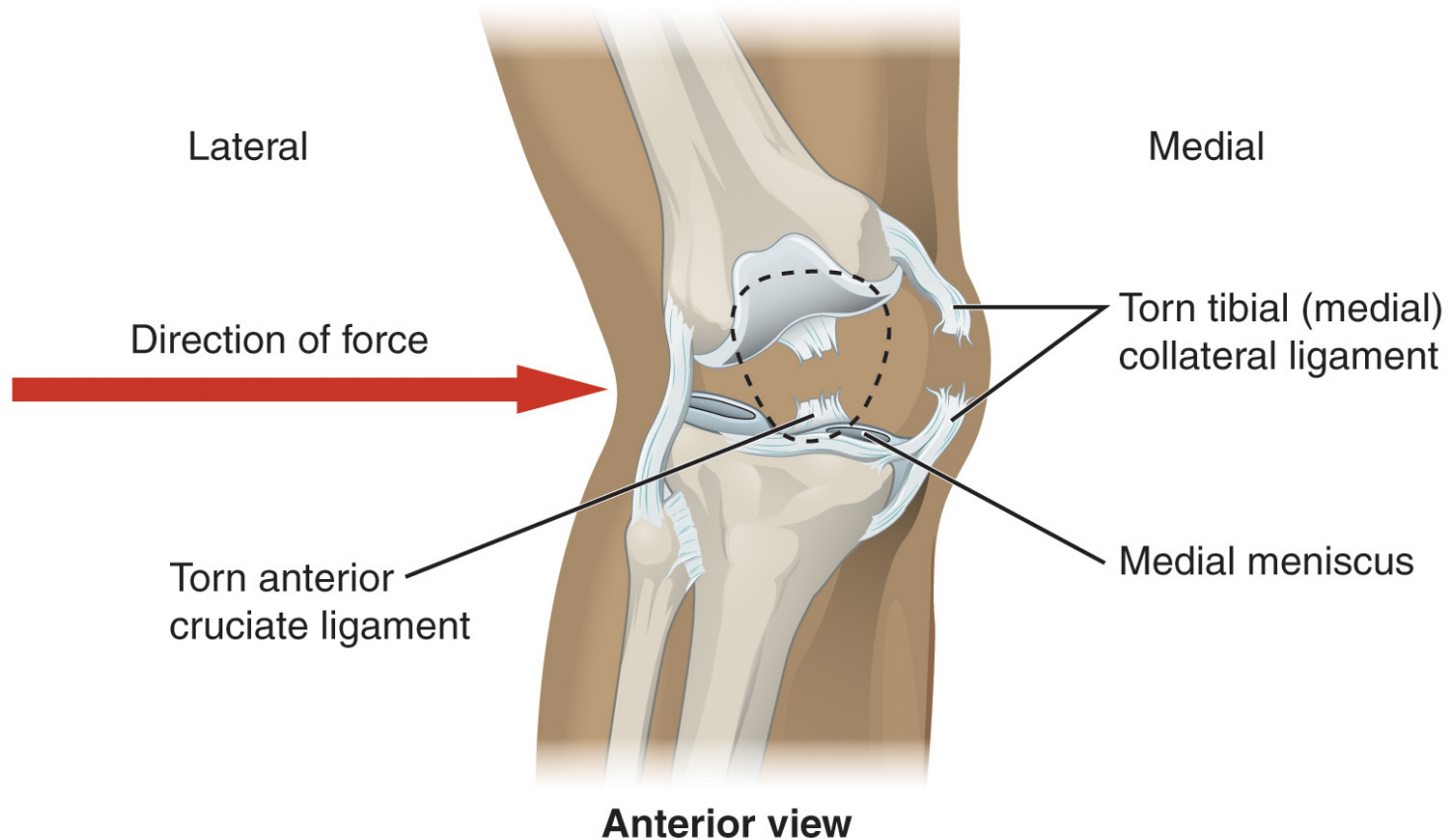


(c) Anterior view of right knee

Knee Joint Ligaments



Knee Injury



f) Ankle Joint

- Anatomical components
 - Formed from articulations among lateral and medial malleoli, and talus
- Movements
 - Dorsiflexion and plantarflexion
- Type of joint
 - Diarthrosis
 - Hinge
 - Monoaxial

